

**Agricultural Bureau**  
of South Australia Inc.  
**PATHWAY TO IMPROVEMENT**



**ADVISORY BOARD OF AGRICULTURE  
ANNUAL REPORT**





## TABLE OF CONTENTS

Overview of the Agricultural Bureau of South Australia .....	1
History .....	3
Governing Body .....	5
Purpose .....	5
Goals .....	5
Aims .....	6
Chair’s Report .....	7
Working Group Convenor Reports .....	11
Government .....	11
Promotions and Membership.....	12
Research Development & Extension .....	16
- Projects.....	16
Board Members .....	19
Meeting Dates.....	22
Year in Review.....	23
Industry Review .....	25



## **OVERVIEW OF THE AGRICULTURAL BUREAU OF SOUTH AUSTRALIA**

The Agricultural Bureau of South Australia (The Ag Bureau) is a not-for-profit organisation run by farmers for farmers.

With a proud history in South Australia, The Ag Bureau has assisted primary producers since 1888 and is the only farmer network group of its kind remaining in Australia.

Membership is open to anyone who is associated with or has an interest in farming, agricultural development and education and an annual membership fee is charged.

The Bureau supports agricultural development through the provision of information and expertise to producers and the wider community via an extensive network and works in close co-operation with the Government of South Australia, namely Primary Industries and Regions SA (PIRSA) and Department of Environment and Natural Resources (DENR).

**The Bureau aims to bridge the gap between scientist, agribusinesses and primary producers by supporting current projects in regional South Australia.**

Branches meet regularly usually on a monthly basis to exchange ideas and information, discuss farming practices and issues and work on common issues and challenges together.



## History

In 1887, an English-born printer named Albert Molineux suggested establishing an Agricultural Bureau in South Australia.

On the 27th of February 1888, the Government adopted his suggestion and the inaugural meeting of the Central Agricultural Bureau of South Australia was held on the 10th of April 1888.

The Central Agricultural Bureau was the precursor to the Advisory Board of Agriculture, the present-day governing body of the Bureau. Set up to advise the Minister of Agriculture on farming matters and to act as the governing body for the Agricultural Bureau of SA, the Central Bureau had 10 members.

There had been a number of local agricultural associations and farmers' clubs in South Australia since soon after settlement in 1836. When the Central Agricultural Bureau was created, it set about encouraging the establishment of local Bureau Branches.

In its first 12 months, it supported the founding of branches in a dozen rural areas, including Mannum, Millicent, Nuriootpa, Stansbury, Burra and Gumeracha. Gumeracha, Millicent and Nuriootpa (now known as Angaston) are all still operating and are just three of around 75 active branches across the state with nearly 1400 members.

**In 2013 the Agricultural Bureau of South Australia celebrated 125 years of serving agriculture.**



## **GOVERNING BODY**

The Advisory Board of Agriculture (ABA) is the Agricultural Bureau of SA's governing body.

The Board comprises representatives from Bureau regions, government departments and the University of Adelaide. It provides policy advice and recommendations on agricultural issues to the Government of South Australia and when required, direct advice to the Minister for Agriculture, Food and Fisheries.

The ABA is currently in its second year of a three year project which is a grant (\$455,000) from the Australian Government – Sustainable Agriculture Innovation Grant which will provide a greater awareness and understanding of soil acidification and provide innovative and cost-effective methods to encourage farmers to increase their adoption of liming.

The ABA manages the Spirit of Excellence in Agriculture Awards which comprises four awards which recognise achievements in the agricultural field.

As the governing body the ABA are responsible for the following:

- Managing and administering finances, insurance, awards and projects;
- Preparing and distribution of submissions on industry relevant issues;
- Facilitating the implementation of research, extension and training programs that enhance agriculture, business management and sustainable natural resource management;
- Promoting the aims, objectives and achievements of The Ag Bureau and the importance of agriculture and sustainable resource management to the broader community; and
- Providing a view forward to industry bodies and Government Departments on behalf of members.

## **PURPOSE**

### **Goals**

The goals of Ag Bureau network are to facilitate:

- An active and informed rural sector creating and managing changes in the industry.
- Innovation and adoption of agricultural best practice.
- An informed and supportive government that takes an active role in agricultural development.
- Farmers, landholders, educators and the wider community being informed and supportive of the work of The Ag Bureau and its vision for rural SA.

## Aims

The aims and objectives of the Bureau are to:

- Provide farmers with access to up-to-date research and technical information with practical on-farm uses.
- Assist members in developing sustainable farming systems.
- Develop an active and informed rural sector that creates and manages change by supplying members with information relevant to their farming practices.
- Initiate innovation and adoption of best practice in the rural sector.
- Enable members to deal with management and production issues by providing opportunities to talk to other farmers and technical officers.
- Foster and support a strong Bureau network that works in partnership with government, education, research providers, agribusiness, industry and the community.
- Promote goodwill, friendship and understanding amongst its members and in the community at large.

**Valuing: knowledge – friendship – understanding –  
vision - leadership**



## CHAIR'S REPORT

I am pleased to present my report on the activities of the Advisory Board of Agriculture for the past year.

This year South Australian primary producers have once again experienced a challenging year – a dry spring of 2014 with summer heatwaves and untimely rains - followed by a mixed start to 2015. Many of our traditional higher rainfall regions are experiencing a reduction in rainfall. However once again, our state harvested an above average grain harvest which has seen their best annual financial returns in more than three decades. Favourable cropping conditions and near-record winter grain yields along with solid returns for livestock have been met with good demand. Recent prices for wool and beef have been, in many cases, the best returns for producers. Unfortunately the horticultural and grape sector continue to experience challenging times.

It was another turbulent start to the year with the bushfires around the State. We hope that any members affected by the terrible fires are now progressing well through the recovery phase and I would like to thank everyone who assisted during these difficult times. To see the ongoing support to fellow rural producers is truly inspiring.

The scenic Yorke Peninsula was chosen for the AGM, dinner and tour in August with the ABA meeting in Minlaton. The annual regional dinner was held at The Inland Sea, Warooka where almost 60 guests enjoyed a presentation by local resident and fourth generation farmer, Renee Farrow from Pt Giles and the 2011 Lois Harris Scholarship recipient.

The regional tour the following day included VIP guests from the dinner and Councillors Tania Stock and David Langford from YP Council providing the opportunity to see some of the best farmland in Australia.

Two board members retired, Richard Murdoch (Yorke Peninsula) and Roger Farley (Fleurieu/Murray Plains). The Board would like to thank both Richard and Roger for their contribution to the Board.

New members welcomed to the Board were David Edwards, regional representative for Yorke Peninsula, Phil Davies, SARDI (replacing ex-member Pauline Mooney), Dr Jason Able, University of Adelaide and Elizabeth Calvert, State President, Women in Agriculture (who has since resigned) and I was fortunate enough to be re-appointed to the position of Chair for a third term.

The Board is currently transitioning to a more cost effective structure which will effectively represent the interests of its members. It was decided to prioritise active representation of members rather than use member's funds for board costs and move from two day to single day meetings saving on travel and accommodation costs. The new Board to be appointed in August 2015 will comprise six regional representatives (down from 12) from the regions, commonly used by state governments and its agencies - Eyre Peninsula; Yorke and Mid/Upper North; Barossa and Light; Adelaide Hills, Fleurieu and KI; South East and the Murray and Riverland. Strong relationships still exist with Government agencies and the media and the Board will continue to provide project and administration support to branches.

Results from the member's survey promoted in the August Ag Bureau Bulletin indicate the following top six reasons for becoming a member.

1. Branch meetings
2. Crop walks
3. State and Federal Government representation
4. Quarterly e-news and industry updates
5. Bus trips
6. Project administration (ie. grants)

The website and the Spirit of Excellence in Agriculture Awards were the top two mediums members thought best promoted the Ag Bureau of SA.

We continue to work with Rural Business Support (RBS) on Board executive support, administration, finance and communications and I would like to thank outgoing Chief Executive (CE) Kay Matthias, the new CE, Brett Smith and the team at Rural Business Support for their ongoing professionalism.

The ABA continues its strong support in the promotion of agricultural industry careers through the Spirit of Excellence in Agriculture Awards. The Peter Olsen Fellowship for Young Farmers is the longest running Award (15 years) followed by the Lois Harris Scholarship which recognises a first year student with the highest TER entering the Bachelor of Agricultural Sciences at Adelaide University. Since 2009 the Rural Youth Bursary has provided grants for young rural people to assist in the development of their chosen career and the Services to Primary Production has seen worthy recipients being rewarded for exceptional industry/community service. In 2014 the Rural Youth Bursary was sponsored by Primary Industries and Regions SA (PIRSA) and we thank them for their support.

The annual awards presentation and dinner was held in October and it was fantastic to see such a high calibre of entries. The winners were outstanding along with all applicants and the judging panel had a very difficult time in deciding the recipients. Guests enjoyed the evening with positive feedback on the informative presentations from the winners of the previous year. Thanks is extended to Rural Business Support (RBS) for their sponsorship to the event.

The recipient of the 2015 Lois Harris Scholarship was recently announced and a cheque was presented to Molly O'Dea ex-Loxton High School student who is currently studying the Bachelor of Agricultural Sciences at the University of Adelaide.

I have attended several meetings and seminars including:

- Lambex, along with a several members from a number of branches in July. This national conference covered all the latest industry information, some which challenged the 850 delegates in relation to adapting to change.
- The New Horizons program which looks at improving poor quality soils and increasing broad acre crops and pasture production.

A range of research projects (see page 15) are currently continuing with Branches, namely through Caring for our Country and State NRM Community Grants which are valued at over \$889,960.

The ABA continues to work on 'Innovative and cost-effective solutions to the treatment of acid soil in SA' through their state-wide Innovation Grant. This project, due to be completed next year will address soil acidification in over 1.9 million hectares of agricultural land that is susceptible to soil acidification providing a greater awareness and understanding providing innovative and cost-effective methods to encourage farmers to increase their adoption of liming.

I would like to thank the Board for their support of these industry initiatives and thank them for their support in sharing the common goals of supporting the South Australian agricultural sector.

As we continue or work in the agricultural industry, representing our members in providing an independent voice to government departments, agencies and partners, whilst providing opportunity for information to be conveyed back to our members, we need to ensure that as a Board, we are providing the services as required by Bureau members.

On behalf of the Advisory Board of Agriculture, I would like to acknowledge three retiring board members that have served nine years full term - Yvonne Correll, Tony Loffler and Janette Ridgway and to David Edwards, Mark Fitzgerald, Ron Milde and Peter Rose, thank you all for your dedication and valued contribution to agriculture in our State.

In closing I would like to thank all Ag Bureau members for their ongoing support.

A handwritten signature in cursive script that reads "Mark Grossman".

**Mark Grossman**  
**Chair**



## WORKING GROUP CONVENOR REPORTS

### Government

Board members: Geoff Page (Chair); David Edwards; Tony Loffler

The working group reviewed the governance issues which could arise from the Board restructure ensuring good governance into the future and the need to mentor new board members.

Consideration was given as to whether it was appropriate for the Board to participate in the Grains Research Development Corporation (GRDC) tender for services which was deemed inappropriate.

Further discussions revolved around SA water and in the development of ways to assist primary producers identify water leaks on their properties. SA Water has since confirmed sponsorship and will submit e-news articles. Their first one contained practical advice for those with water meters.

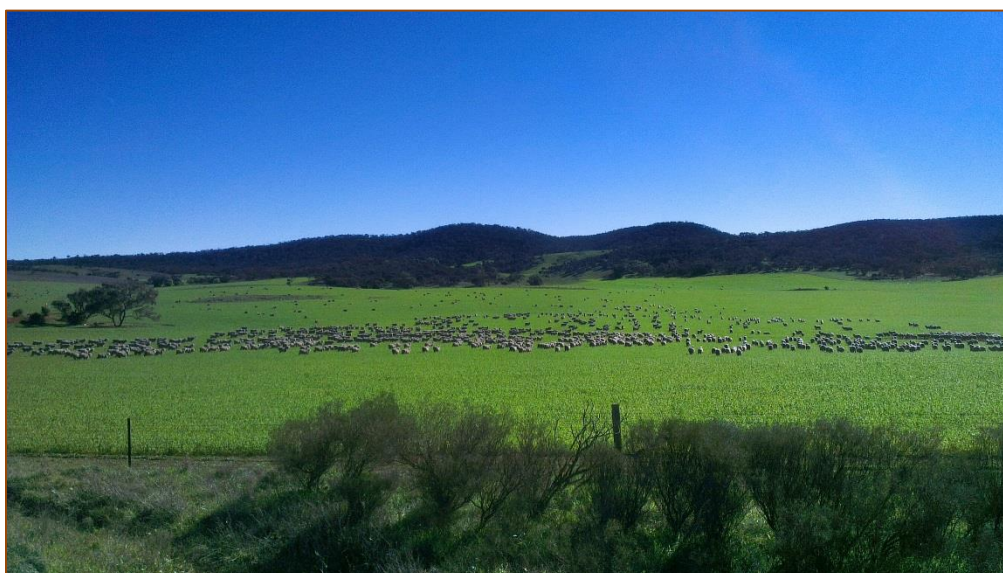
Review of the spray drift issues and concerns from earlier fruit fly outbreaks. Continued dialogue with Biosecurity with discussions based on mutual assistance into the future.

### Submissions

The ABA makes a number of submissions on issues affecting the farming community in South Australia.

Submissions over the past twelve months have included:

- Emergency services levy
- Biosecurity with respect to mice control
- Biosecurity on how to work more effectively together



## Promotions and Membership

Board members: Karen Baines (Chair); Mark Fitzgerald; Yvonne Correll; Elizabeth Calvert  
Rural Business Support representative: Sue Rogers

### Spirit of Excellence in Agriculture Awards

The ABA presents several awards and scholarships each year which are:

- Peter Olsen Fellowship for Young Farmers
- Lois Harris Scholarship
- Rural Youth Bursary
- Services to Primary Production Award

**Peter Olsen Fellowship for Young Farmers** provides an \$8000 bursary for a farmer aged between 18 and 35 to pursue further study, undertake a study tour or run a special project which was sponsored by Primary Industries and Regions SA (PIRSA).

#### 2014 recipient: Tara Hindson

Tara works on the family farm near Frances in the South East and will use the grant towards a study tour to the USA, Western Australia and Queensland where she will further explore new benefits and opportunities in biological farming. Her vision is to continue to manage a successful and sustainable farming business with environmental and ecological aspects at the forefront to ensure viability for the next generation.

**Rural Youth Bursary** is a \$5000 grant for young rural people aged 18-30 years in all types of employment to learn more about their chosen career which was sponsored by Primary Industries and Regions (PIRSA).

#### 2014 recipient – Alexandra Thomas

Alex is a work health, safety and training consultant in Pt Lincoln. The bursary will be put towards a study trip to Norway, which is a country internationally recognized for best practice in fisheries management. Alex is committed to her goal of facilitating a fishing industry driven, collaborative approach towards improving work health and safety performance.

**Lois Harris Scholarship** is a \$2000 scholarship for a first year student studying the Bachelor of Agricultural Sciences at the University of Adelaide.

#### 2015 recipient – Molly O’Dea, Tertiary Entrance Score (TER) 99.25

Molly is from the Riverland and a former Loxton High School student. She will use the next year or so to cover a broad range of agribusiness subjects to work out which specialist path she will take. Molly is passionate, dedicated and excited about her future in agriculture and will use the scholarship money to help pay university fees.

**Service to Primary Production** recognises the achievements of people who have provided exceptional service to primary productions.

#### 2014 recipient – Prof. Andrew Barr

Plant breeder and farmer Andrew Barr, Mallala was awarded for his services to primary production. He says his childhood on the family farm inspired much of his career, particularly watching his father Bob’s love of innovation.

## Website

The Ag Bureau of SA website has continued to be upgraded with more additions to the Transport section and submissions for relevant papers. The Research and Development (R&D) section has been redesigned to make it easier to find information on branch related R&D. The image gallery has been upgraded with members encouraged to send in images from their everyday farm life.

## Social media

Social media presence has increased in the past 12 months with some great interactions between Ag Bureau members. The announcement of the Peter Olsen Fellowship in October, with a link to Nigel Austin's article in The Advertiser, reached 12,544 people with 28 shares.



2014 Peter Olsen Fellowship winner Tara Hindson (centre) with presenters Lucy Olsen (left) Prue Olsen (right)

## E-News

The new layout of the Ag Bureau Bulletin has been well received. A range of varying content has made this publication a very informative communication tool for the Ag Bureau with requests for articles from Grain Producers SA, Livestock SA and SA Grains Industry Trust Fund. Open rate for the March Bulletin was 46% (which is a very good statistic based on the average open rate of 25.8%\*) with delivery 97% and 19 shares.

## Media

Media presence has increased with articles on ESL hikes, Ag machinery transport, silo access for road transport and the Ag Bureau managed Twitter workshops which was picked up by both radio and print. The Spirit of Excellence in Agriculture Awards 2014 also received good print coverage including articles in the Stock Journal, The Advertiser, The Land, Farm Online, Glam Adelaide and radio Magic 899.

\*Based on Email marketing statistics 2015 from Smart insights and MailChimp

## **Sponsorship**

Sponsorship was received from EPNRM for the March EP Twitter Workshops and from GPSA for flights to assist board members to attend Transport Forum. Recently EPNRM and EPARF also funded two farmers to attend the Innovation Generation Conference in Canberra. The Spirit of Excellence in Agriculture Awards were once again kindly sponsored by Primary Industries and Regions SA (PIRSA) for the Rural Youth Bursary and Rural Business Support contributing to the Awards presentation dinner. Many businesses also support their local Ag Bureau branches with in-kind support for guest speakers, assisting with putting on BBQ's as well as sponsorship for bus trips and sticky beak days.

## **Ag Support and Collaborations**

The ABA promoted and sourced participants for the University of Adelaide's state-wide Quad Bike Study through the Centre for Automotive Safety as well as provided contacts and assistance for a Sydney University PhD student for a Lower Eyre Peninsula study into Animal Management during emergencies. We continue to support and work with state-wide groups such as GPSA, Livestock SA and Ag Ex Alliance. We also provided, through GPSA, interviewees for SAFECOM through Hon Tony Piccolo, Minister for Emergency Services regarding establishment of a grants fund to enhance community resilience.

## **Advertising**

Through email distribution the ABA has attracted paid advertising over the past 12 months however their own e-news, The Ag Bureau Bulletin has remained devoid of advertising to ensure an informative newsletter is distributed amongst its network.

## **Bus Trips**

Since the withdrawal of Westpac sponsorship, branches have been organising their own bus trips.

## **Membership**

Membership fees remain the same as in previous years, please see below:

- Standard Membership \$55.00 (inc GST)
- Associate Member \$33.00 (inc GST)
- Student Member \$27.50 (inc GST)
- Introductory Member \$27.50 (inc GST)

Membership renewal packs were sent out to all Branches in June with reminder notes included for outstanding fees.

## Long Standing Member Award

Long serving branch members are recognised annually with awards being presented to the following members during 2014/15.

### 50 YEARS

1961	Wayne Tschirpig	Lone Pine Tanunda, Barossa Valley
1956	Donald Bagshaw	Moonta, Yorke Peninsula
1958	Donald Ferguson	Moonta, Yorke Peninsula
1961	Roger McCauley	Moonta, Yorke Peninsula
1962	Donald Smith	Moonta, Yorke Peninsula
1960	Philip Woodward	Moonta, Yorke Peninsula
1954	Donald Ross	Lone Pine Tanunda, Barossa Valley
1954	Cedric Neldner	Lone Pine Tanunda, Barossa Valley
1953	Malcolm Mill	Moonta, Yorke Peninsula
1953	Kenneth Schliebs	Lone Pine Tanunda, Barossa Valley

### 40 YEARS

1968	Alan Wilson	Laura, Upper North
1966	Graham Pech	Laura, Upper North
1971	Dean Semmler	Lone Pine Tanunda, Barossa Valley
1965	Brian Cross	Alford/Moonta, Yorke Peninsula
1965	Dennis Ford	Moonta, Yorke Peninsula
1973	Wayne Chapman	Moonta, Yorke Peninsula
1968	Roger Day	Moonta, Yorke Peninsula
1973	Bradley Hicks	Arthurton, Yorke Peninsula

### 20 YEARS

1977	Bevan Smith	Laura, Upper North
1977	Philip Zanker	Laura, Upper North
1993	Neil Neldner	Lone Pine Tanunda, Barossa Valley
1994	Philip Neldner	Lone Pine Tanunda, Barossa Valley
1993	Neville Eichler	Lone Pine Tanunda, Barossa Valley
1984	Darren Mill	Moonta, Yorke Peninsula
1987	Craig Woodward	Moonta, Yorke Peninsula

## Research Development and Extension

Board members: Janette Ridgway (Chair); Peter Rose; Ron Milde

Ex-officio members: Phil Davies; Tim Herrmann; Greg Cock; Brian Hughes; Simon Goodhand

### Projects

The ABA has a long and proud history of managing projects that benefit members from State to local level. Funding is provided by the Australian Government and the Government of South Australia.

Ag Bureau funds (including the Bureau Project Fund) have also been used to resource branch projects.

### Current

#### **25th Anniversary Landcare Grants (\$19,650)**

##### **Laura SA – Improved soil cover, biodiversity and weed management**

##### *Laura Agricultural Bureau*

Develop and implement native vegetation and weed management plans to improve soil health, biodiversity, ground cover, fire and weed management in the Laura/Wirrabara districts of SA. The project will increase adoption of practices that will improve ecosystem function over 1500 ha and the quality of the natural resource base over 1200 ha.

#### **Precision pasture management (\$24,000)**

##### *Monarto Agricultural Bureau*

Demonstrate and promote the 'Pastures from Space' technology as a means of receiving estimates of pasture growth (PGR) and feed on offer (FOO) using a Moderate Resolution Imaging Spectroradiometer (MODIS) satellite sensor to provide resolution and measurement of PGR and FOO at 250m<sup>2</sup>.

#### **Point Pass Soil Constraints Investigation (\$24,750)**

##### *Point Pass Agricultural Bureau*

Investigate the soil constraints that limit productivity and sustainability within the area of Point Pass. Constraints include soil sodicity and heavy textured clay layers affecting plant root growth and water infiltration, the limiting nutritional effects of salinity and boron with the lower rootzone, acidity on the slopes and alkalinity on the flats.

#### **Innovative and cost effective solutions to the treatment of soil acidity in the North-Western agricultural areas of the SAMDB NRM region (\$22,000)**

##### *Agricultural Bureau of SA*

Demonstrate and promote the on-the-go soil pH machine to measure and map the spatial variability of soil pH across paddocks and use the zoned maps to apply targeted variable rates of lime (engagement with 20 properties).

State NRM Community Grants 30/9/2013 - 30/9/2014

**Improving water repellent sandy soils near Coomandook \$28,500**  
*Coomandook Agricultural Bureau*

Monitor and analyse a previous trial to test ways of better managing water repellent sands to reduce erosion risk and increase productivity.

Innovation Grant 1/2/2014 - 31/3/2016

**Innovative and cost-effective solutions to the treatment of acid soils in SA (\$414,990)**  
*Agricultural Bureau of SA*

Over 1.9 million hectares of SA agricultural land is susceptible to soil acidification. Addressing the issues of soil acidification which can significantly affect potential crop production and pastures. Liming is the most effective and economical method for treatment however it is not always readily available and can be cost prohibitive. New lime sources are also being evaluated. Farmer groups from seven Ag Bureau's around the State have taken part to date.

**Completed**

Caring for our Country 30/8/2013 - 31/3/2015

**Improved soil management and productivity in the Mid North (\$53,460)**  
*Halbury Whitwarta Agricultural Bureau*

Improved farmer knowledge and skills in soils and soil management and trial rates of organic matter and gypsum in soil to reduce sodic effects to improve structure of heavy clays.

**Innovative sustainable land management at Stockport (\$49,390)**  
*Stockport Agricultural Bureau*

Trial sites on organic matter demonstrating innovative and local untried techniques to address soil condition issues in restrictive clay soils for improved infiltration rates and improved productivity.

**Improving claying practice through addition of organic matter (\$54,340)**  
*Sherwood Precision Management Systems Group*

Increased awareness of the role of soil organic carbon in soil health and the constraint that bleached subsoils have on agricultural production.

**Ongoing effects of soil modification using clay (\$53,570)**  
*Karoonda and Districts Agricultural Bureau*

One hundred land managers have improved their knowledge and skills in managing natural resources to deliver ecosystem services. Thirty individuals engaged in NRM activities.

**Improving surface soil depth and subsoil conditions of soils (\$45,540)**

*Lochaber Agricultural Bureau*

Twenty land managers improved their knowledge and skills in relation to soil management and improving soil health.

**Increasing productivity on clayed sands (\$54,780)**

*Southern Mallee Agricultural Bureau*

Sixty land managers improved their knowledge and skills by addressing the issues experienced by some farmers in areas where eroding sandy soils did not improve after having clay added to them.

**Improving soil structure in hard setting soils of Eastern Eyre Peninsula (\$44,990)**

*Crossville Agricultural Bureau*

Increased awareness of the constraints imposed by poorly structured subsoil layers impacting on crop yield. Modifying these constraining layers and the addition of soil conditioners are increasingly seen as tools for improving production.

**State NRM Community Grant** projects undertaken directly by incorporated branches:

- *Angaston – Barossa producer groups sustainable pasture challenge paddocks*
- *Koonunga –Improving poor soil health in North Barossa vineyards*
- *Monarto –Pasture improvement and no-till interface*

## **BOARD MEMBERS**

### **Mark Grossman, Chair**

Mark Grossman represents the Barossa Valley region and has been a Bureau member of the Angaston branch since 1982 where he held all office positions. He operates a family primary production partnership with enterprises including sheep (self-replacing merinos, 1<sup>st</sup> cross ewes, prime lambs and operating Koonawarra white suffolk and border leicester studs), cattle, cropping and viticulture. The farming properties are situated in the Angaston and Sedan regions. Other community involvement includes Federal President of Australian White Suffolk Association, State President of SA Border Leicester Sheep Breeders and President of Angaston AH&F Show Society.

### **Geoff Page, Deputy Chair**

Geoff Page represents the Adelaide hills region on the Agricultural Bureau of SA Board which is where he resides and has his own farming business that produces cut flowers, certified organic vegetable and herb seedlings which are sold at farmers markets. The farm also produces prime lambs and hay for sale. Geoff works part-time at the University of South Australia as the student Ombudsman. Geoff has academic qualifications in education, agriculture, agricultural economics and land valuation.

### **Janette Ridgway, Treasurer**

Janette is Board representative for the Upper South East Agricultural Bureau branches. As a farmer, Janette works on a mixed farming enterprise with her husband and son. Their farm is east of Bordertown, in the district known as Pine Hill. They grow broad acre crops, have a sheep enterprise as well as a horticulture business growing gladiolus bulbs. Janette has a passion for agriculture, community and family and brings these skills and understanding to the Board along with a desire for learning and sharing of information.

### **Tony Loffler, Executive**

Tony represents the Riverland and Northern Mallee, a major horticulture region and areas of dry land farming. Major crops include almonds, citrus and wine grapes with lesser production of fresh stone fruit, table grapes, dried fruit and vegetables. Tony and his wife operate a small mixed fruit growing property with their main production being dried stone and vine fruit. He brings experience in horticulture and dry land farming practices and River Murray issues to the board as well as an understanding of meeting procedures and an ability with words to record and edit reports. Tony's vision is for a more viable and effective Ag Bureau movement for SA.

### **Yvonne Correll**

Yvonne Correll has been the Mid/Lower South East representative since 2006 and has been involved with primary production all her life. Initially Yvonne lived on a farm property at Moonta and later with husband Trevor on their cropping property at Kulpara. Since 2004 they have lived north of Lucindale on a grazing property producing prime lambs. Yvonne's role has been predominantly administration within the business. Her particular interest on the ABA has been the scholarship awards for young people, serving on the Board with her administration skills and knowledge on the three working groups and networking with Bureau members.

### **Ron Milde**

Ron represents the Lower North region of Freeling, Mallala, Owen, Stockport, Tarlee, Halbury-Whitwarta and Point Pass. Residing at Eudunda, Ron farms 1200 ha between Eudunda and Robertstown with just over two thirds crops and the remainder sheep and an additional 2300 ha, 30 km east for crops (wheat, barley, oats, lentils and canola). Ron has been a member of the Point Pass Ag bureau for 45 years and has held most positions.

**Ron Milde cont.**

He currently sits on the silo committee and previously, with the SA Farmers Federation, was chairman of the Eudunda Branch and the Lower North Zone. To keep active Ron plays lawn bowls and enjoys travelling.

**Mark Fitzgerald**

Mark is from Tumby Bay and represents the Lower Eyre Peninsula. He has been a primary producer for 25 years farming wheat, barley, chick peas and sheep. Mark is a current member of the Butler Ungarra Ag Bureau which has over 30 members and has held all positions spanning over the past 25 years. Mark's expertise to the Board is in local knowledge of the Lower Eyre Peninsula and the dissemination of research outcomes through his involvement with the EPARF group (Eyre Peninsula Agricultural Research Foundation).

**Peter Rose**

Peter has been an active Agricultural Bureau of SA member for over 20 years and represents the Murraylands. His passion for the Murraylands, which runs from Coonalpyn/Tintinara in the south to Karoonda in the north and from east of the Murray to the border, makes him an effective and knowledgeable representative.

**Karen Baines**

Representing the Eastern Eyre Peninsula, Karen lives with her husband on 2500ha North West of Ungarra cropping mainly barley and canola and run about 1000 Merino's. Karen loves the farm life and is also a mother of two. She is a passionate Advocate, volunteer on several committees, treasurer, grant writer and farm safety and compliance consultant in her spare time. Karen brings to the Board a variety of business qualifications and experience, information, communication technology skills and a no nonsense approach to dealing with issues affecting agriculture. She has a Diploma in Rural Business Management and Occupational Health and Safety and is the administrator of the farms heavy vehicle accreditation in the National Heavy Vehicle Accreditation Scheme.

**Andrew Kitto**

Andrew represents the Upper North region and is a farmer himself. He is a current member of the Laura Branch and with Nelshaby being the only other Branch in his region his Board duties are somewhat reduced compared to other regional representatives. Andrew is a practical board member and since commencing on the Board in February 2013 he has helped organise a successful interstate bus tour for our region; organised a practical farm machinery/transport demonstration to DPTI representatives; represented the ABA at the Australian Government Ag White Paper meeting and established links with other representatives, eg NRM, GPSA, DPTI and Government of South Australia.

**David Edwards**

David is a fifth generation farmer at Minlaton on the southern Yorke Peninsula with his ancestors taking up the land in 1880. David's cropping rotations have changed over the last fifteen years from barley pasture rotations working the land five to seven times, to no till farming, sowing three hundred hectares each of wheat, barley and canola. David is seen the significant changes in farming over the past ten years and is very positive and optimistic about the future of farming.

**Dr Jason Able**

Jason is program coordinator and lecturer for the Bachelor of Agricultural Sciences as well as lecturer in the Bachelor of Science (Biotechnology). Jason's research interests are broadly categorised under the research area of Plant Breeding & Genetics.

**Dr Jason Able cont.**

Based at Waite Campus Jason works on the durum wheat breeding program which was founded in the late 1980s by the late Professor Tony Rathjen (former ABA board member). Since November 2010 Jason has been continuing with Tony's legacy. He is actively engaged with durum stakeholders across Australia including Durum Growers, Southern Australia Durum Growers Association (SADGA), GRDC, SAGIT, San Remo Macaroni Pty Ltd and Weston Milling.

**Tim Herrmann**

Tim Herrmann has worked in the areas of soils, land management, landcare and natural resources management for over 30 years. He currently leads the Sustainable Soils team in the Department of Environment, Water and Natural Resources (DEWNR) who are responsible for leading and developing strategies and programs that achieve the sustainable use and management of the soil and land resource in SA. Key programs include soil protection, soil acidity, perennial farming systems, soil carbon and productive capacity and are delivered through partnerships within the agricultural industry, NRM Boards, grower groups, research institutions and other agencies.

**Greg Cock**

Greg is Primary Industries and Region SA's (PIRSA) nominated ex-officio member of the Board. He has had a long association with the Bureau and the Board. Initially, in his roles in natural resources management in country locations he interacted a lot with branches of the Bureau, working together on projects and presenting at meetings. In later years he was the Executive Officer for the ABA for several years and initiated a process to reshape the business of the Board to work to a sustainable model where it no longer relied upon public funds for its operation. As the current member, Greg works to maintain the connection between the Board and Bureau.

**Kay Matthias**

Kay, originally from a farming background, has been employed in the agricultural sector since 1997 primarily in the communications and marketing area until becoming involved in the rural financial counselling network in 2004. In 2006 Kay was appointed the inaugural Chief Executive of Rural Business Support, successfully leading the organisation through significant change from 12 regional services to one State-wide service. In 2010 Kay established a projects division which looks for ways to collaborate with government and industry to better support a strong and resilient primary industries sector.



2014 Agricultural Bureau of SA Board Members L-R (back) David Edwards, Tim Herrmann, Ron Milde, Peter Rose, Phil Davies - (middle) Karen Baines, Kay Matthias, Greg Cock, Andrew Kitto, Yvonne Correll; - (front) Tony Loffler, Mark Grossman, Janette Ridgway, Geoff Page (Absent) Dr Jason Able

## MEETING DATES

### 2014

14 August	AGM and Annual Regional Dinner	Minlaton
14 August	Board Meeting	Minlaton
29 September	ABA Executive Meeting	Teleconference
13 October	Board Meeting	Adelaide

### 2015

19 February	Board Meeting	Adelaide
16 April	Board Meeting	Adelaide

## Board attendance

	From	To	BOARD MEETINGS	
			Eligible to attend	Meetings attended
<b>Mark Grossman</b>	Jul-14	Jun-15	4	4
<b>Geoff Page</b>	Jul-14	Jun-15	4	4
<b>Janette Ridgway</b>	Jul-14	Jun-15	4	4
<b>Yvonne Correll</b>	Jul-14	Jun-15	4	4
<b>David Edwards</b>	Jul-14	Jun-15	4	4
<b>Tony Loffler</b>	Jul-14	Jun-15	4	4
<b>Richard Murdoch</b>	Jul-14	Jun-15	1	1
<b>Ron Milde</b>	Jul-14	Jun-15	4	4
<b>Mark Fitzgerald</b>	Jul-14	Jun-15	4	1
<b>Peter Rose</b>	Jul-14	Jun-15	4	4
<b>Andrew Kitto</b>	Jul-14	Jun-15	4	4
<b>Karen Baines</b>	Jul-14	Jun-15	4	4
<b>Elizabeth Calvert</b>	Jul-14	Jun-15	2	2
<b>Kay Matthias</b>	Jul-14	Jun-15	4	3
<b>Tim Herrmann</b>	Jul-14	Jun-15	4	3
<b>Greg Cock</b>	Jul-14	Jun-15	4	4
<b>Phil Davies</b>	Jul-14	Jun-15	4	4
<b>Jason Able</b>	Jul-14	Jun-15	4	0

## YEAR IN REVIEW

Activities aligned to aims and objectives of the Board:

To **encourage excellence** in agriculture, business management and sustainable natural resource management:

- Spirit of Excellence in Agriculture Awards
- Long serving member award
- Projects run by the ABA and Ag Bureau branches
- Branch meetings and activities across the state

To **work in close co-operation** with government departments which have regular interaction with agricultural producers:

- Submissions relating to:
  - Agricultural Competitiveness White Paper Public Comment
  - SA Water – cost of water for broad acre farmers in South Australia
  - PPSA, PIRSA, DPTI – 90 day transport project – ongoing cooperation on the necessary changes
- Applications for Caring for Our Country projects
- Applications for Department of Environment, Water and Natural Resources and Natural Resource Management Board projects
- Applications to GRDC for branch events

To aid in the **development of vibrant community and industry networks**. Valuing knowledge, friendship, understanding, vision and leadership:

- Spirit of Excellence in Agriculture awards and dinner
- Long serving member awards
- Branch meetings and activities across the state
- Attend Rural Business Support AGM
- Attendance by ABA members at the Ag Excellence Alliance Forum and Dinner and presentation of report at that Forum
- Attendance at RIRDC Rural Women’s Award

To advise relevant Ministers through the Board on **issues raised by members** and visa-versa:

- Regular meetings with Minister for Agriculture, Food and Fisheries
- Submissions relating to:
  - Agricultural Competitiveness White Paper Public Comment
  - SA Water – cost of water for broad acre farmers in South Australia
- Telecommunications review
- Ag machinery movement on road – changes required discussion with Minister

To **lead, coordinate and foster the Bureau**, representing Bureau Members’ best interests:

- Long serving member awards
- Liaison between regional Board representatives and branches
- Regional meetings
- Support for, and administration of, branch projects
- Regular communications with branches on topics that are of interest

To **submit to the Minister** such recommendations as the Board may consider desirable in the interests of agricultural industries of SA:

- Submissions relating to:
  - Agricultural Competitiveness White Paper Public Comment
  - SA Water – cost of water for broad acre farmers in South Australia
  - Ag machinery movement on road and truck access to silo sites, HML access for heavy vehicle

To **deal with other organisations and government departments** that the Board considers of relevance to Bureau members:

- Regular meetings with Primary Industries and Regions SA (PIRSA) Chief Executive
- Meetings with other industry groups ie. Primary Producers SA (PPSA)
- Interaction on working groups such as emergency response plans and farmer health initiatives

To **make such rules that are necessary** from time to time for the administration of the Board and the Bureau:

- Engaged:
  - Executive Officer
  - Administration Officer
  - Communications Officer

To **facilitate the implementation of research, extension and training programs** that enhance agriculture, business management and sustainable natural resource management:

- Projects run by the ABA and Ag Bureau branches

To **promote the role and achievements of the Bureau** and the importance of agriculture and sustainable resource management to the broader community:

- Regular meetings with Minister for Agriculture, Food and Fisheries
- Regular meetings with Chief Executive, Primary Industries and Regions SA
- Media articles (ie. Stock Journal and regional papers)
- ABC Radio interviews
- Spirit of Excellence in Agriculture Awards dinner
- Continue to update website
- Regular posts on social media site, Facebook & Twitter

## INDUSTRY REVIEW

### 2015 South Australian Wine Grapes

Total reported crush of South Australian wine grapes in 2015 was 716,574 tonnes, an increase for the fourth year in a row, with 10,557 tonnes (1.5%) above the 2014 harvest of 706,017 tonnes. The top three regions by volume in 2015 were the Riverland with 63.4% of the crush (454,184 tonnes), the Barossa Valley with 6.1% (43,889 tonnes) and Langhorne Creek 5.4%. The total estimated value of the crush was \$399 million, up by \$24 million (5%) compared with 2014. The average purchase value per tonne across the state decreased from \$599 in 2014 to \$557 per tonne.

### 2013-14 South Australian Gross Food, Wine and Fibre Revenue \*

#### Field crops \$4 521m

Field crop Gross Food Revenue for 2013-14 was \$4.5 billion, \$223 million higher than 2012-13 equivalent figure. In total, 8.5 million tonnes (including feed grains) of various grains, pulse seeds and oilseeds were produced in 2013-14, which is above the five-year average production level of 7.5 million tonnes. The above average production within field crops contributed to production value growing by \$366 million or 22% during 2013-14. The increase in commodity and finished food exports of \$138 million or seven per cent on the 2012-13 year was another factor in the field crop industry recording a positive outcome.

#### Meat (ex-sheep) \$2 979m

The 2013-14 gross food revenue for the South Australian livestock industry is \$4.07 billion (24% of South Australia's gross food and wine revenue), \$429 million or 12% higher than the equivalent figure for 2012-13. Livestock processed meat exports increased by 38%, with sheep and lamb meat exports being the major contributor in this category.

#### Sheep meat \$1 901m

#### Sheep fibre \$385m

South Australia exported 50 000 tonne (shipping weight) of processed lamb meat worth \$390 million to 50 different countries with United States of America the main destination followed by China, United Kingdom and Japan. Revenue generated by the South Australian sheep and wool industry reached a record level of \$1.48 billion in 2013-14 exceeding previous levels recorded by \$200 million.

#### Livestock

Livestock commodity exports consist of live sheep, goats and cattle exports. In 2013-14, South Australia exported 118 719 sheep and lambs valued at \$12 million, 29 507 goats for \$2.6 million and 46 187 beef cattle worth \$42 million

**Dairy \$863m**

Gross food revenue in 2013-14 for the South Australian dairy industry is estimated to be \$863 million. This is a \$3 million increase on the previous year's figure. Despite a lower volume of milk produced in South Australia, higher prices and an increase in the amount processed within South Australia has assisted to cushion the potential decline of the South Australian dairy industry.

**Horticulture (ex-wine) \$2 976m**

In 2013-14, the South Australian horticultural industry contributed \$2 976 million or 17 per cent of South Australia's gross food and wine revenue. The largest single horticulture contribution was attributable to potatoes, providing over \$443 million, or 15%, toward horticulture revenue in 2013-14. Other key contributions were derived from citrus (\$342 million) apples and pears (\$331 million), tomatoes (\$292 million) and other fruit (\$266 million). Horticulture product sales at the retail level were worth \$1 882 million with food service sales estimated to be worth \$204 million.

**Seafood \$818m**

In 2013-14, the South Australian seafood industry contributed \$818 million or five per cent of South Australia's gross food and wine revenue. The largest single contribution comes from other marine fish (including snapper, whiting, garfish, shark, snook, Australian salmon, tommy ruff and mullet) providing 19% or \$158 million toward seafood revenue in 2013-14. This is followed by other large seafood sectors of southern rock lobster (\$144 million or 18%); Southern Bluefin tuna (\$124 million or 15%); and prawns (\$103 million or 13%).

*\*Data extracted from PIRSA Industry Scorecard Overviews 2013-14 (latest data available)*

**Agricultural Bureau**  
of South Australia Inc.  
**PATHWAY TO IMPROVEMENT**



**Advisory Board of Agriculture  
C/- Rural Business Support  
555 The Parade Magill SA 5072**

**T 08 8364 5063  
E [agbureau@ruralbusinesssupport.org.au](mailto:agbureau@ruralbusinesssupport.org.au)**

**[www.agbureau.com.au](http://www.agbureau.com.au)**